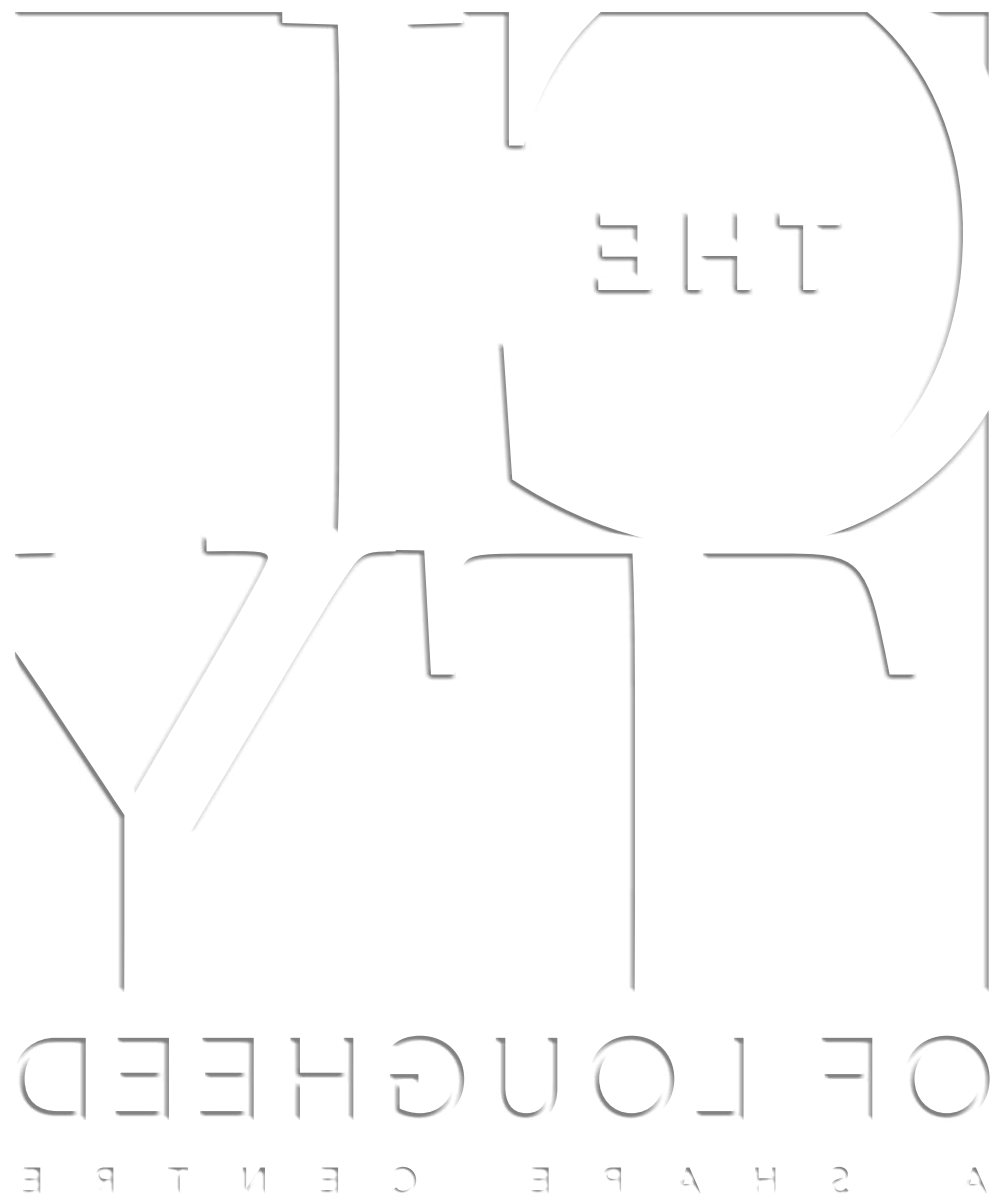




OF LOUGHEED

A S H A P E C E N T R E

FIRST NEIGHBOURHOOD • TOWER ONE



FROM THE SAME TEAM THAT BROUGHT
YOU THE AMAZING BRENTWOOD.

FIRST NEIGHBOURHOOD • TOWER ONE



The City Of Lougheed Is Here.

A 40-ACRE MASTER PLAN IN BURNABY

This incredible new community will have homes, shops, restaurants, parks, a plaza and a new transit exchange, all within its new 16 city blocks.

WITH OVER 23 HIGH-RISE TOWERS

Residents will belong to an energized, expertly planned metropolis that attracts like-minded people from around the globe.

MULTIPLE NEW NEIGHBOURHOODS

Neighbourhoods will be diverse and designed around livability, with some areas that feel like downtown and others that feel like a quiet suburb.

WITH MORE THAN 10,000 CITIZENS

The City of Lougheed recognizes a global shift toward living in urban centres, with 2.5 billion people worldwide moving to cities within the next 35 years.

1.5 MILLION SQ. FT. OF NEW RETAIL

That translates to 300+ shops and restaurants – everything from fashion, specialty shops and a fresh grocer to high-end boutiques and countless restaurants.

AND TWO SKYTRAIN LINES RIGHT ON-SITE

The site will feature easy access to the Millennium Line, the new Evergreen Line, direct-route buses and more.

PLUS ABUNDANT GREEN SPACE & LUSH LANDSCAPING

Drawing inspiration from the region's surrounding greenery, The City of Lougheed will have an organic, park-like feel everywhere, from its walkable neighbourhoods all the way up to its landscaped green roofs.



The Eight Reasons The City Of Lougheed Creates Value For All Its Citizens:

01

VISION & MASTER PLAN

for The City of Lougheed:

Shape is creating a diverse, all-new city within 40 acres in Burnaby, complete with new neighbourhoods, shops, restaurants, events and remarkable urban energy.

[Page 06](#)

02

SKYTRAIN & LOCATION

in The City of Lougheed:

The City of Lougheed is home to two SkyTrain lines integrated into a new transit hub, making it effortless to access the Millennium or Evergreen lines, direct-route buses and more.

[Page 16](#)

03

SHOPPING, DINING & CULTURE

in The City of Lougheed:

New retail and dining will be part of The City of Lougheed, featuring fashion and houseware brands, restaurants and bistros, fresh markets and everyday services.

[Page 21](#)

04

LANDSCAPING & GREENERY

in The City of Lougheed:

Shape will incorporate abundant nature into every neighbourhood. Residents can relax in The City of Lougheed's 1.6-acre central park, jog along the northern greenbelt, play in the pocket parks or stroll its many landscaped boulevards.

[Page 30](#)

05

SERVICE & SECURITY

in The City of Lougheed:

The City of Lougheed offers a level of investment security seen nowhere else. For convenience and peace of mind, residents will also benefit from an on-site, round-the-clock concierge, valet, landscapers and security personnel.

[Page 35](#)

06

HOMES & DESIGN

in The City of Lougheed:

Shape brings its elevated standards to The City of Lougheed's first residences with floor plans and features that showcase the best in intelligent living.

[Page 38](#)

07

INDOOR & OUTDOOR AMENITIES

in The City of Lougheed:

Countless extras come with a home at The City of Lougheed, including access to a state-of-the-art recreational facility with 18,000 sq. ft. of indoor/outdoor space to socialize, work out, play recreational table tennis and billiards, or entertain friends in style.

[Page 50](#)

08

VERIFIED VALUE

in The City of Lougheed:

The City of Lougheed is a rare investment opportunity that will increase in value as each new neighbourhood comes to life. For a homeowner's lifestyle and livelihood, no other residence provides the investment, design, transit, service, shopping and entertainment experience found here.

[Page 52](#)

01

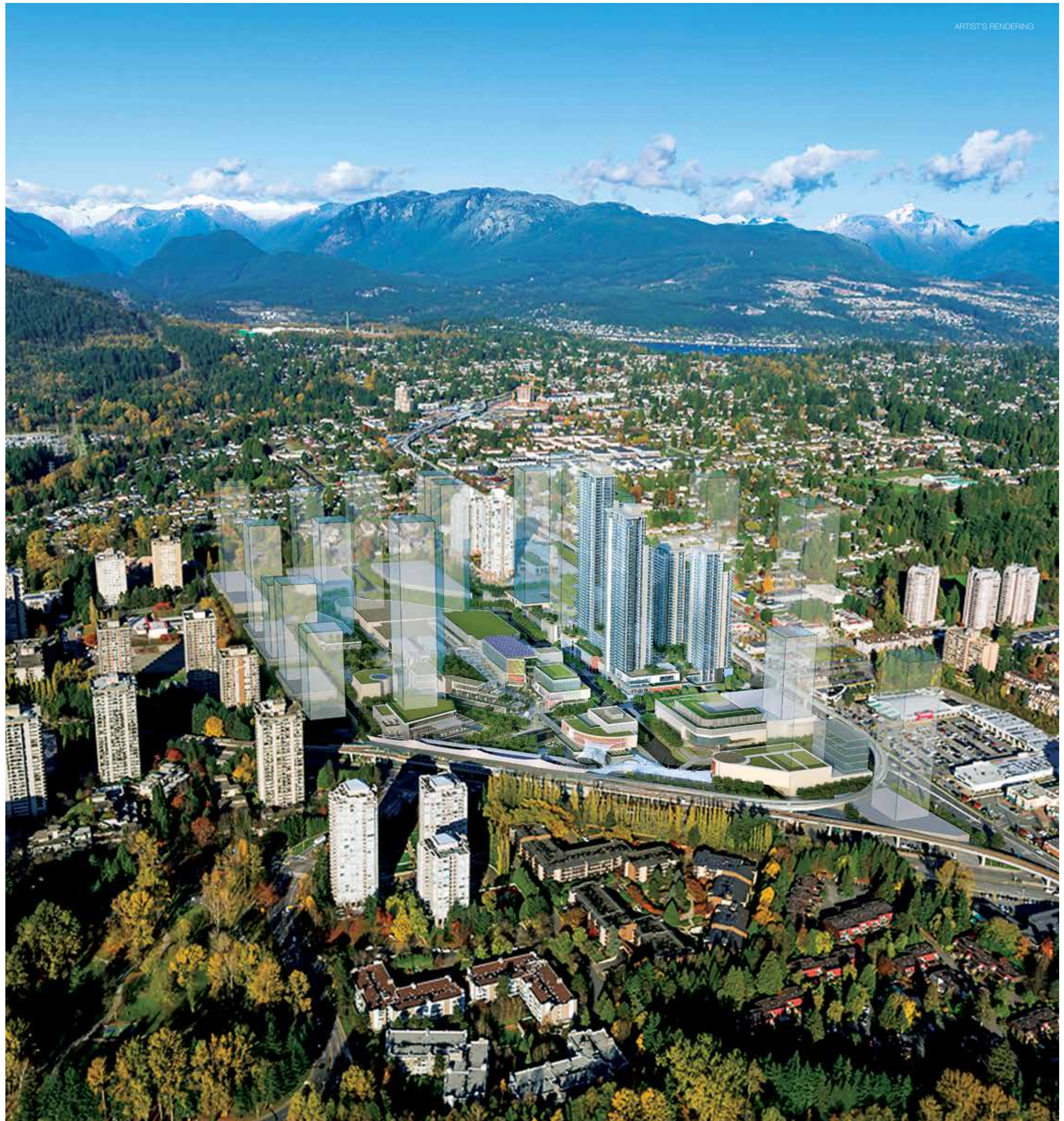
THE VISION & MASTER PLAN for The City of Lougheed.

Canada's Largest New Master Plan

At the centre of Metro Vancouver, where two SkyTrain lines meet and the region's largest highways converge, a rare 40-acre site will be dramatically reconceptualized into The City of Lougheed. Residents will experience an unparalleled urban lifestyle within a community designed for livability, ease and enjoyment. The streets will be filled with architectural and culinary inspiration from around the world, lush walkable boulevards and a never-ending array of shops, restaurants, sidewalk cafés, celebrations and cultural experiences, all in one remarkable place.

All Eyes On The City:

The City of Lougheed represents a \$7 billion investment over 30 years, creating an entirely new way to live, shop, socialize and invest in Metro Vancouver.





A City Of Neighbourhoods

The world's most intriguing cities are more than mass metropolitan areas. They comprise distinct boroughs and districts that are greater than the sum of their parts.

In The City of Lougheed, each unique neighbourhood will offer unmistakable character and a purposefully curated mix of amenities, conveniences and public spaces. Look forward to pedestrian-friendly high streets, landscaped boulevards spilling out into public plazas, active retail storefronts and lively events all year long.

As The City of Lougheed grows with each new neighbourhood, the investment value of its homes will also increase. This means that early purchasers into The City of Lougheed will continue building equity over the long term as the community's vision to become a world-class urban centre comes to life.

Join a city with vision, excitement and proven long-term value.



“The City of Lougheed will be a leader in North American real estate and a legacy for Metro Vancouver. Our success at The Amazing Brentwood shows that master planned, transit-oriented urban communities are the future. Similar to Brentwood, the value of The City of Lougheed is based on strong fundamentals – full integration of rapid transit, inspiring architecture, meticulous planning, and a best-in-class mix of shops, dining, entertainment and homes. With these features and its prime location, The City of Lougheed will become a diverse regional draw unlike anything else in North America.”

– JOHN HORTON, PRESIDENT, SHAPE LIVING

1,400 HOMES SOLD IN 21 MONTHS



1



2



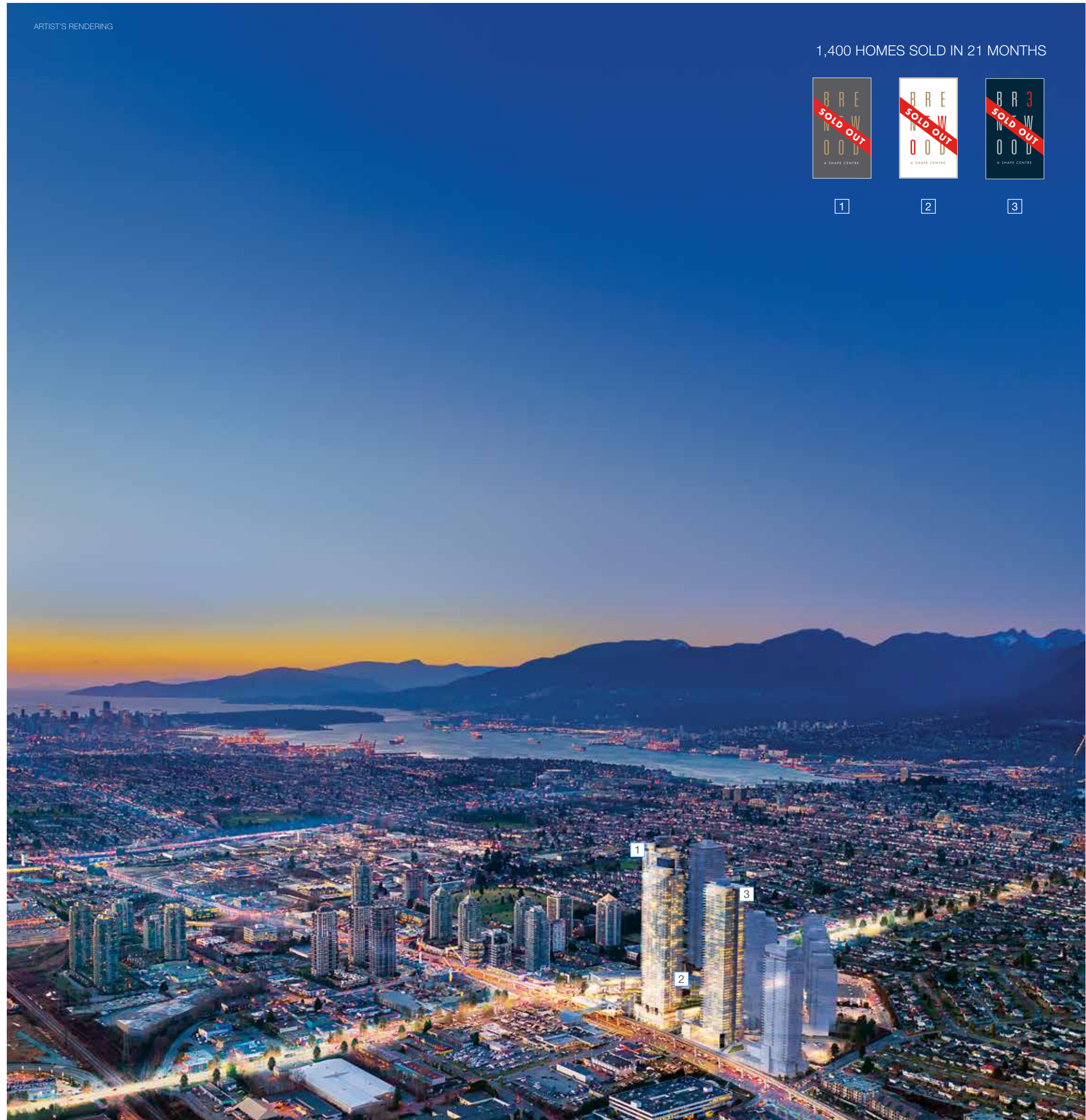
3

Building The Region's Most Exciting Places

As the sole developer leading all components of our projects, from residential to retail and office, Shape holds a long-term commitment to the cohesiveness, livability and longevity of the master planned communities that anchor our homes. This is true for The City of Lougheed and its landmark sister project, The Amazing Brentwood, shown here.

The Amazing Brentwood:

- The Amazing Brentwood project in Burnaby redefined how visionary a master plan could be
- Its unprecedented sale of 1,400 homes in 21 months shows people's desire to live in an integrated community
- Shape holds a long-term commitment to all its projects, which ensures a high level of livability well into the future



THIS
VISIONARY,
EXPERIENCED
TEAM IS THE
ONLY ONE
IN THE REGION
WITH THE
RESIDENTIAL,
RETAIL +
PLACE-MAKING
SKILLS TO BRING
THE CITY OF
LOUGHEED
TO LIFE.

DEVELOPER:

Shape Properties Corp. is a Western Canadian real estate investment, management and development company that is passionate about creating dramatically better places.

Through meticulous attention to detail, entrepreneurial energy and continuous pursuit of innovation, Shape creates master-planned, transit-oriented communities that are relevant to and dominant for the future of real estate. Shape is currently creating some of the largest and most exciting projects in North America, including The City of Lougheed and The Amazing Brentwood. From residential design excellence through Shape Living to best-in-class merchandising of retail assets, Shape offers a full operating platform built on valuable relationships, strong execution and solid financial partnerships.

MASTER PLAN ARCHITECT:

James K.M. Cheng Architects has considerable experience in both urban design and the rezoning of large-scale mixed-use projects, including sustainable communities. The firm's achievements can be seen locally – in Vancouver's Shangri-La Hotel, Shaw Tower and the Fairmont Pacific Rim hotel – and in prestigious projects around the world.

FIRST NEIGHBOURHOOD ARCHITECT:

GBL Architects is a creative, forward-minded firm of local architects providing a complete range of services to the private and public sectors. Each of their commissions is embraced with a commitment to excellence at every stage of project delivery. The firm's work spans 25 years and is extensive locally and around the world, from the head office of the World Health Organization in Geneva to large residential and mixed-use projects throughout Metro Vancouver.

MASTER PLAN

LANDSCAPE ARCHITECT:

SWA Group is recognized as one of the world's design leaders in the fields of landscape architecture, planning and urban design. SWA has offices world-wide and has received over 800 awards for their work in more than 60 countries. SWA Group's local projects of note include Marinaside Crescent in Vancouver's Yaletown and The Amazing Brentwood. Other prominent projects include the Burj Khalifa tower park in Dubai, Guthrie Green in Tulsa, Oklahoma and the California Academy of Sciences in San Francisco, California.

FIRST NEIGHBOURHOOD LANDSCAPE ARCHITECT:

PWL is a leading Vancouver-based landscape architectural firm with 40 years' experience in public- and private-sector planning and design across Canada, the U.S. and internationally. The company works collaboratively with a wide range of specialists and collateral professions to create innovative, imaginative places that incorporate both social and environmental benefits.

INTERIOR DESIGN:

Shape Living Interior Design

Behind Shape's extraordinary living environments are more than 25 years of world-class experience in interior design. Their integrated approach means involvement at every level of development, from space planning to reinventing the way kitchens are designed and outfitted. Superior quality and attention to detail are the cornerstones of all interior spaces, resulting in exceptional value for every Shape Living homeowner.

BRANDING & GRAPHIC DESIGN:

Thought Shop is the boutique creative agency behind the branding of The City of Lougheed. With 20 years of experience, Thought Shop articulates a brand's character through design and writing, including helping large master planned projects come to life through marketing, signage, advertising campaigns, presentation centres and print collateral. The company works arm in arm with clients to craft tailored solutions, with clients ranging from large global brands to small local favourites.

02

SKYTRAIN & LOCATION in The City of Lougheed.

All The Energy Of Downtown In A More Central Location

The sheer size and scale of The City of Lougheed will dramatically reshape the region and create the most central urban hub in Metro Vancouver. By seamlessly integrating the neighbourhood with its two on-site SkyTrain lines, celebrating transit will be an integral part of its offering. From major car thoroughfares and direct-route buses to new pedestrian and biking routes, residents will have immediate access to all of Metro Vancouver and beyond.

A FULLY CONNECTED CITY IN FIVE WAYS

By SkyTrain:

Both the Millennium and Evergreen lines meet here, right on-site and steps from home, at the region's transit hub.

By Bus:

Enjoy one of the largest and best-served rapid-bus exchanges in the region.

By Foot:

Five kilometres of new walkable, pedestrian-oriented paths will connect each neighbourhood and district seamlessly.

By Bike:

Cycle from the many neighbourhood paths to Central Valley Greenway for a safe bike path from Burnaby to Vancouver.

By Car:

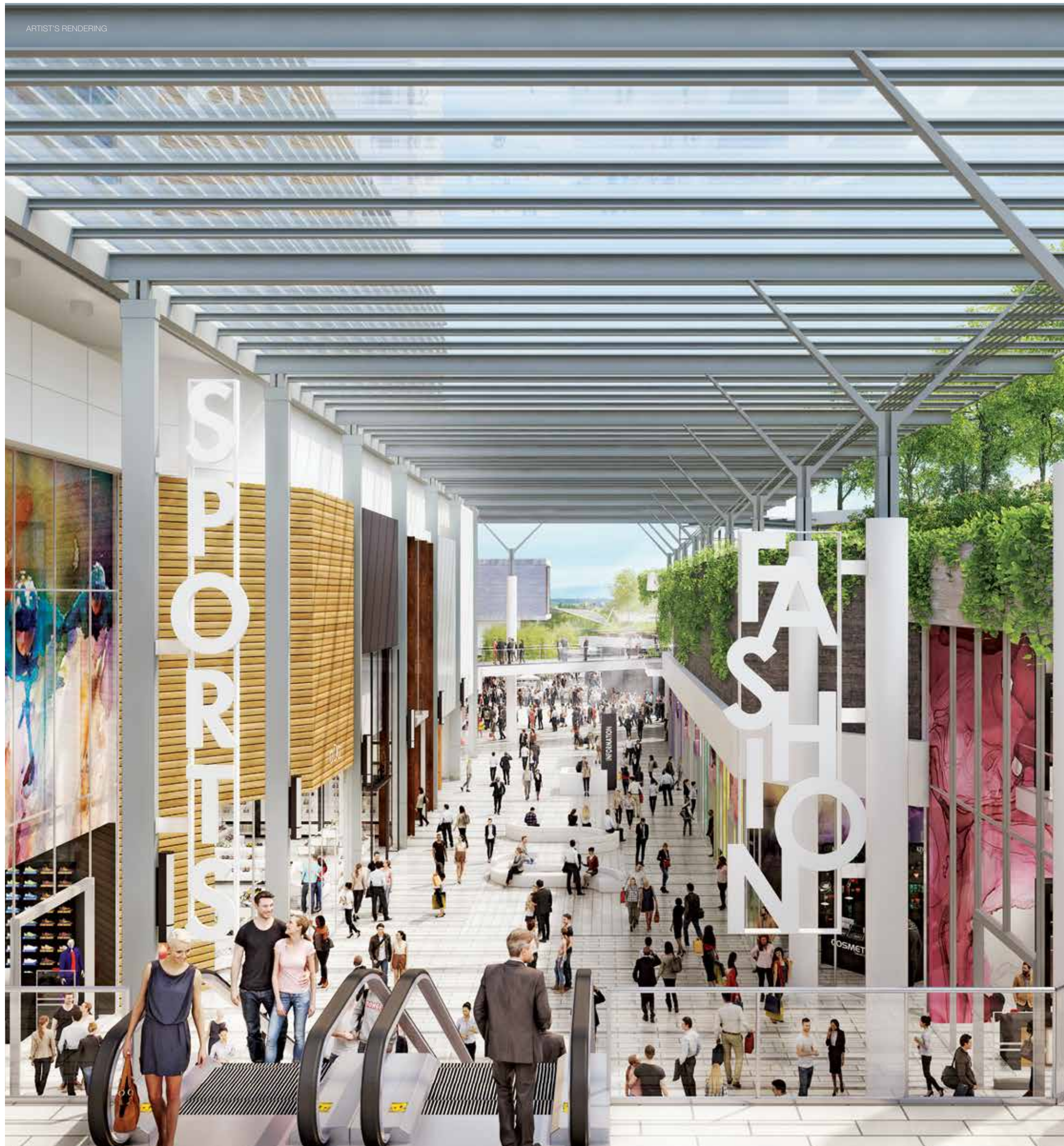
Residents will be minutes from Highway 1, Lougheed Highway and the Port Mann Bridge.



An All-New SkyTrain & Transit Experience

Accessing transit here will be an exciting, fully integrated event. On the ground level, cyclists and bus passengers can grab coffee or other travel essentials at the on-site shops before boarding the frequently departing buses. Upstairs, an iconic roof will provide all-weather comfort as passengers hop on the Millennium or new Evergreen lines to a range of destinations, from downtown Vancouver to connecting transit for Simon Fraser University.





03

SHOPPING, DINING & CULTURE in The City of Lougheed.

300+ New Shops And Restaurants

The City of Lougheed will transform into a bustling entertainment destination and the main shopping district for the surrounding region and beyond, featuring a specialty grocer and a range of on-site shops, restaurants and services, from high-end to homegrown.

Main Boulevard:

A colourful open-air boulevard full of neighbourhood necessities, including an urban grocery market along with a variety of unique eateries and cafés.

Galleria:

A weatherproof outdoor retail experience (shown opposite page) that will lead to the fully reimagined shopping centre. The centre will be expanded and enhanced, and will offer an exciting collection of energetic, global fashion brands.

Events Plaza:

This central plaza will be the epicentre of the neighbourhood's outdoor events, with vibrant cafés, restaurants, patios and countless dining options lining its edges. The plaza will be easily accessible via SkyTrain and will provide a welcome sense of arrival to The City of Lougheed.

Transit Plaza:

Residents opting for transit will have a selection of quick-service conveniences on both levels of this all-new transit exchange, from espresso to sip on to snacks for the commute.

Shop, Dine & More

Best-in-class retail will be one of the main draws of the events plaza, where shoppers will relax over lattes or glasses of wine in the dynamic heart of The City of Lougheed.



Welcome To The Main Boulevard

Feel the excitement in The City of Lougheed's main street – an expansive tree-lined boulevard that will form one of the major outdoor shopping areas for the neighbourhood. A specialty grocer, cafés and countless patios will spill out onto the broad pedestrian-oriented sidewalks as shoppers browse its many boutiques and creative window displays, or enjoy one of the street's open-air celebrations, from parades and night markets to exclusive outdoor fashion shows.

Western Exposure

Within The City of Lougheed's 16 city blocks, this promenade will be its brightest thoroughfare, capturing the day's most favourable light, with cycling tracks and wide sidewalks connecting everyone north to Cameron Street or south to the transit plaza.



“Let’s Eat Downstairs!”

The 300+ new shops and restaurants at The City of Loughheed will include a variety of new and different culinary experiences, from fresh-roasted coffee and weekend brunches to sophisticated cocktails and lively evening venues for dinner. Some of the new restaurants will be elegant and exotic, some will be casual and boisterous, but all will be found here.



Eat Outside:

Residents will enjoy summertime tapas under twinkling lights near the plaza, or gather with friends on a favourite patio warmed by outdoor heaters.

Dine Inside:

Choose from family-friendly restaurants and sophisticated wine bars to casual bistros. Whatever the craving, a range of global tastes and environments will await.

In Groups:

The City of Loughheed will create countless ways for people to socialize over great meals, especially at microbreweries, sports-themed restaurants and energetic cafés.

On the Go:

Residents will have a variety of convenient food options, including a rotating lineup of takeout stalls, sandwich counters and coffee shops located in the shopping centre and throughout the neighbourhood.





A Calendar Full Of Celebrations, Markets And More

The City of Lougheed will be brought to life, day to night and during all four seasons, by the top-quality entertainment and exciting events that will animate its streets, plazas, parks and neighbourhoods.



Social Events:

Fashion shows, festivals, galas, family entertainment and VIP movie nights are just a taste of the social fun residents can expect all year long. Look forward to endless opportunities to gather close to home with friends, family and neighbours.

Live Music:

With dedicated plazas, stages and sound systems engineered to accommodate full-scale concerts, The City of Lougheed will be a unique venue for everything from the latest headliners to family-friendly acts and everything in between.

Artisan Markets:

The City of Lougheed will be a hub of local talent and creative culture, where tastefully curated public markets will celebrate the authenticity and vitality of the entire community.

Seasonal Celebrations:

The holidays will shine bright at The City of Lougheed, with awe-inspiring light shows, spectacular performances, an extraordinary Santa photo experience and enough holiday cheer to transform the community into a winter wonderland.

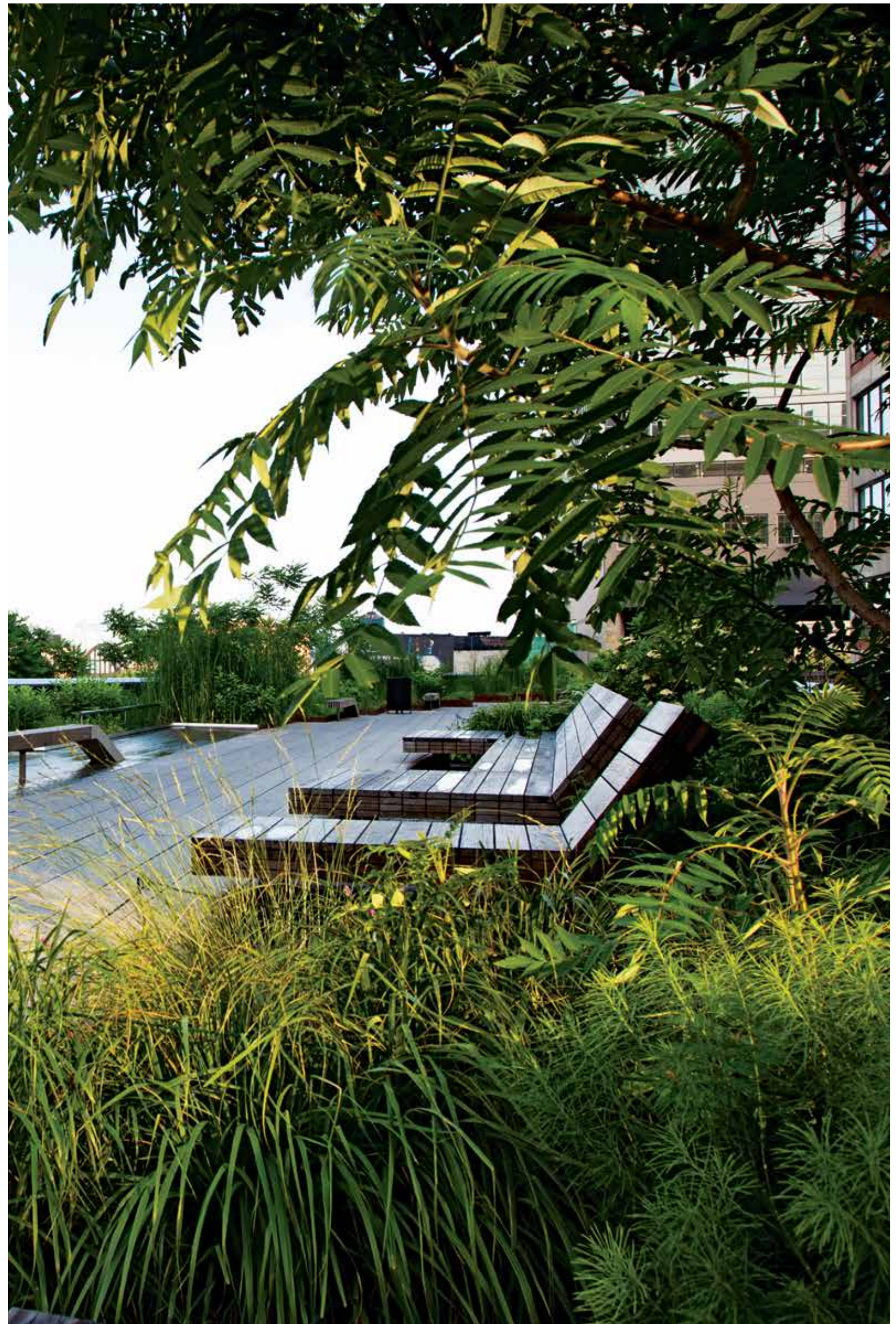


04

LANDSCAPING & GREENERY in The City of Lougheed.

Greenery And Parks Throughout

Thirty percent of The City of Lougheed has been purposefully designed to be shared open spaces enhanced by lush landscaping. This includes the community's green streets, small and large parks, urban trails, view corridors, landscaped rooftops, water features, and other natural and built features. An emphasis on openness and nature not only creates welcoming, peaceful places to spend the day, it also pays homage to the untouched beauty seen all around The City of Lougheed, from the forested hills to the many local green spaces this part of beautiful British Columbia has treasured for generations.





Time to Celebrate:

Summertime concerts. Carnivals. Outdoor yoga and movie nights under the stars. Holiday extravaganzas. Lantern parades and fireworks events. All of this and more will take place at the central park and its adjoining events plaza.



05

SERVICE & SECURITY in The City of Loughheed.

Giving You Peace Of Mind

A Shape home not only provides tremendous investment security, it also offers homeowners a level of exceptional service that brings ease and personal security to everyday living.

OUR HOST PROGRAM:

Every member of our team, from concierge to contractors, undergoes our comprehensive training program, introducing our global model for experience and our service-first culture.

IMMACULATE GROUNDS:

We have a passion for creating clean, beautiful places – and keeping them that way. Our long-term commitment means that our communities will be flawless the day you move in and will continue to flourish over time.

LOOK FOR THE EXTRAS:

Take an umbrella if a sudden shower erupts, or borrow a cruiser bike to zip around the neighbourhood. Every resident and guest is a valued member of our community and will be treated accordingly.

HOW CAN WE HELP?:

Everyone from the building concierge to landscapers, maintenance staff and valet parkers will be here to welcome you to The City of Loughheed, making it easy to access whatever you need.

SECURITY 24/7:

The City of Loughheed will be a safe and secure community, with well-lit walkways and parkades, and a rotating presence of trained security personnel available at all hours.

KEEP IN TOUCH:

Our team will be available in person and online to make your experience as comfortable and enjoyable as possible. Call, email or tweet with a concern or suggestion and we'll get right back to you.

SHAPE LIVING
WORKS WITH
PENSION FUND
PARTNERS
TO CREATE
COMMUNITIES
LIKE THE CITY OF
LOUGHEED AND
THE AMAZING
BRENTWOOD.
THE RESULT
IS A SECURE
INVESTMENT
ALL AROUND.

YOUR INVESTMENT IS SAFE

The City of Lougheed is a multi-phased, master planned community supported by Canada's largest public-sector pension fund and institutional fund manager. Our financial partners view real estate as a solid, long-term holding asset, and believe that The City of Lougheed will produce steady, rising returns.

THIS LOCATION IS PROVEN

With a 30-year vision and Burnaby's award-winning planning process, this \$7 billion master planned project was conceived to leverage The City of Lougheed's privileged location at the geographical centre of Metro Vancouver in beautiful British Columbia. In addition, its two on-site SkyTrain lines and nearby highway access will give residents easy, convenient access to the entire region.

SHAPE IS IN THIS FOR THE LONG TERM

Shape is invested in The City of Lougheed indefinitely. Backed by our pension fund partner, Shape will continue to manage and oversee every aspect of the entire 40-acre development, from its purchase through to its management, bringing a consistent level of excellence and value to our homes long into the future.

06

HOMES & DESIGN
in The City of Lougheed.

Prime Homes In The First Neighbourhood

Here it is: the opportunity to claim one of the inaugural homes in a master plan that will revolutionize how people live, socialize, shop and invest in Metro Vancouver. The architecture of the community's first 55-storey high-rise is sleek and globally inspired, and features 500+ residences showcasing the most thoughtful level of interior design in the region.

First Neighbourhood:

The First Neighbourhood in The City of Lougheed includes a specialty grocery store and four residential towers, all positioned adjacent to the new retail main street for easy access to shopping and all-season patios.



ARTIST'S RENDERING

TOWER ONE: 500+ HOMES

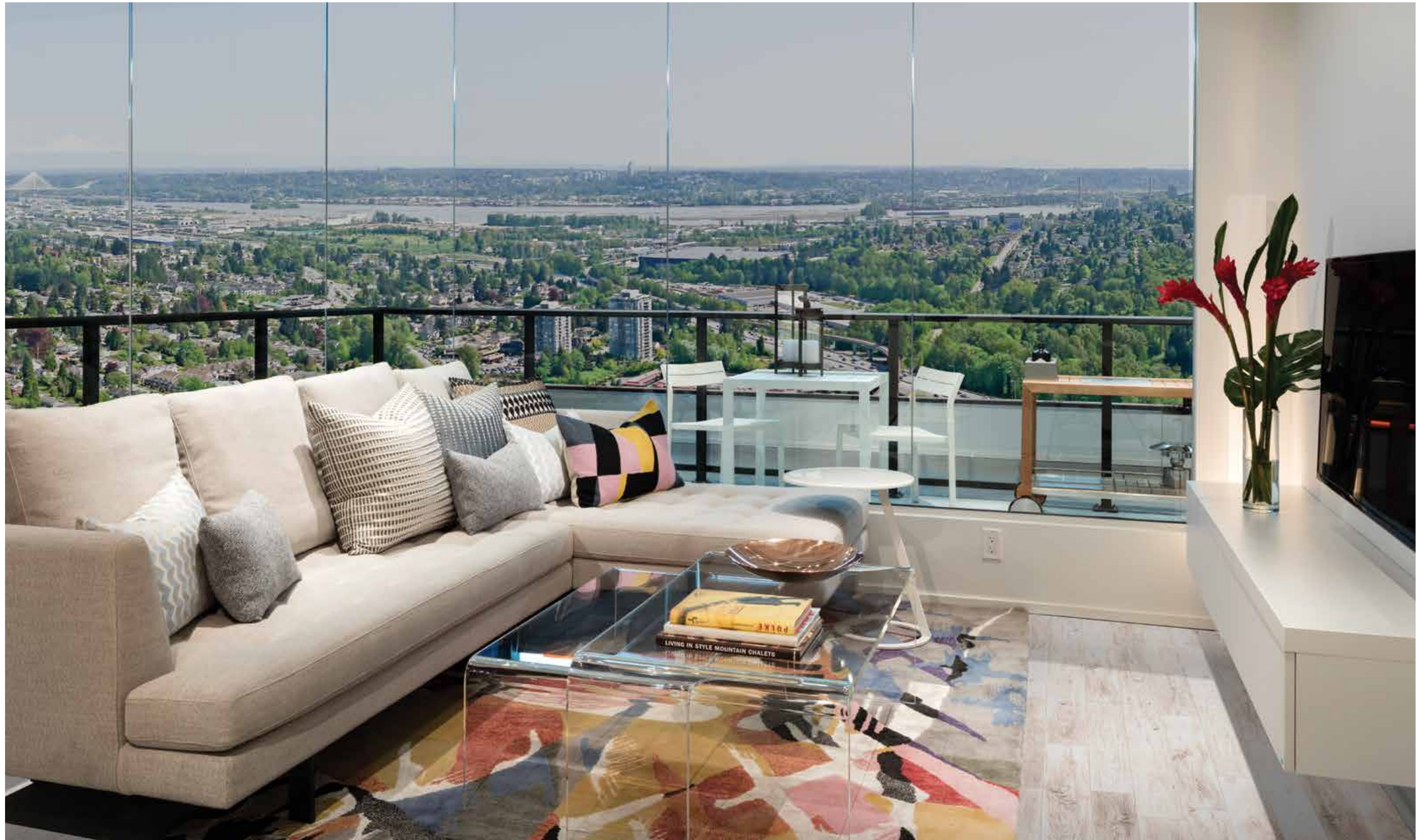
First Neighbourhood, Tower ONE

- The master planning expertise of Shape and James K.M. Cheng Architects, combined with the building design of GBL Architects
- The exterior character of these premier homes will be modern and timeless, featuring a palette of quality materials and West Coast detailing
- Each 1-, 2- and 3-bedroom home includes an open-plan design that allows an abundance of natural light to brighten the entire living space
- Homes feature large, elongated balconies that wrap the exterior of the building and provide residents with a true sense of indoor/outdoor living
- The landscaped rooftops of all four buildings are staggered in height, creating spiralling green spaces reminiscent of the forested slopes rising up around the site
- An attractive arrival experience includes an expansive lobby facing the neighbourhood's pocket park and water feature
- The building's "twinning" architectural style creates the look of two slim buildings joined together, showcasing an elevated green space high in the air
- Residents will enjoy breathtaking views of Simon Fraser University, downtown Vancouver, Burnaby Lake, Mount Baker, the North Shore mountains, the Fraser River and the Vancouver Golf Club
- An 18,000 square-foot private amenity for residents includes a fitness area, outdoor lounge, guest suites, community gardens and more

Timeless Design And Quality Materials Create The Perfect Canvas for Living

- Intelligent floor plans use space efficiently and create rooms that are easy to furnish
- Gourmet L-shaped kitchens with large islands offer ample storage and come in three designer colour schemes
- Large balconies have room for furniture and outdoor fireplaces and show off exceptional views

- Time-honoured materials give these homes a solid foundation, with style that will last for decades
- Homes offer features found in single-family residences, like side-by-side laundry





In Three Luxurious Colour Schemes, The Shape Kitchen Is Attractive And Expertly Planned

- The proven L-shaped design is a flexible and spacious kitchen layout with room for multiple chefs
- A kitchen island and ample countertops in polished stone create more space for food prep and socializing
- Soft-close drawers and cabinet doors ensure a quiet environment
- The Bosch refrigerator and dishwasher are concealed behind custom European cabinetry to create a visually seamless look
- A gas cooktop provides consistent cooking temperatures, while the wall oven gives the space a clean, high-end feel
- Thoughtful details include a storage pantry, recessed lighting and marble herringbone backsplash for timeless style

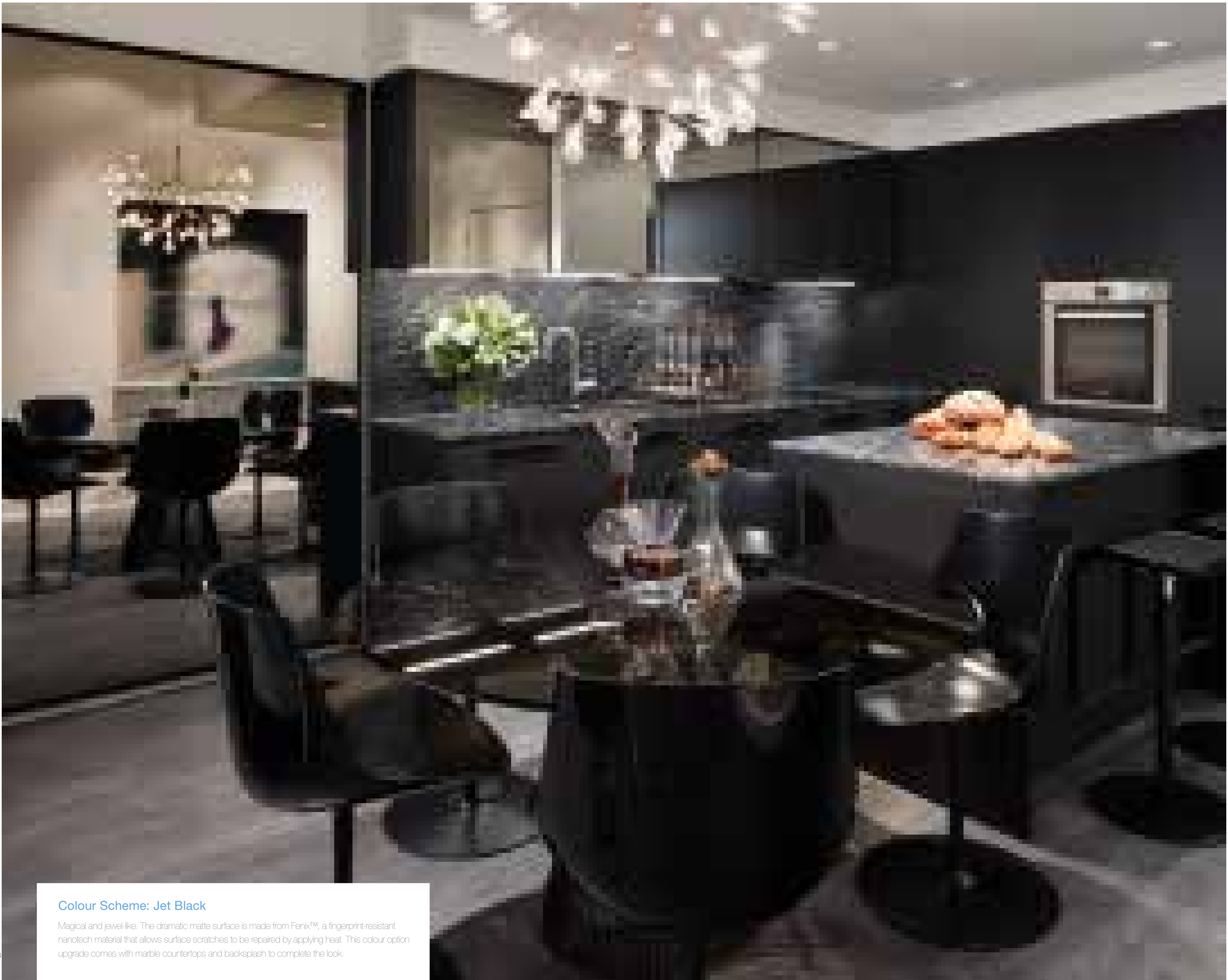
Colour Scheme: Cashmere Grey

A soft "grège" palette, the shade of a comfortable French cashmere sweater. The look offers warmth with classic elegance.



Colour Scheme: Pearl White

Clean, fresh and reminiscent of the lustre of pearl. A timeless foundation for homeowners to accessorize in any style, from modern to classic.



Colour Scheme: Jet Black

Magical and jewel-like. The dramatic matte surface is made from Fenix™, a fingerprint-resistant nanotech material that allows surface scratches to be repaired by applying heat. This colour option upgrade comes with marble countertops and backsplash to complete the look.



Thoughtful Details Make a Big Impact



KITCHEN ISLAND:

Every home features a kitchen island, ideal for food prep or to use as a convenient social centerpiece

BOSCH APPLIANCES:

Integrated Bosch appliances include a chef-style wall oven and four-burner gas cooktop for standard colour schemes

AMPLE CABINERY:

Full-height European cabinetry creates 30 percent more storage space than in most new homes

SPACIOUS LAUNDRY ROOM:

A full-sized laundry room in every home includes space for a side-by-side washer/dryer, cabinets and hanging rod

SMART OUTLETS:

Well-located USB and four-plug outlets allow residents to charge all their devices with ease

KITCHEN PANTRY:

A full-height kitchen pantry gives homeowners additional room to store cooking essentials

WORKSPACE:

Shape creates a dedicated space for owners to add a workstation to charge and use a computer (most homes)

STORAGE & PARKING:

A private storage space and at least one secure underground parking spot are included with each home



A Unique Perspective On Beautiful British Columbia



07

INDOOR & OUTDOOR AMENITIES in The City of Lougheed.

This Private Amenity Is Beyond Compare

The First Neighbourhood's remarkable 18,000 square-foot facility spans three levels, including a landscaped green rooftop for outdoor lounging, community gardening or barbecuing. Inside, residents can organize game nights and table tennis tournaments, enjoy yoga, Pilates or intense cardio workouts, host festive holiday feasts in private event lounges with full kitchens — and so much more.

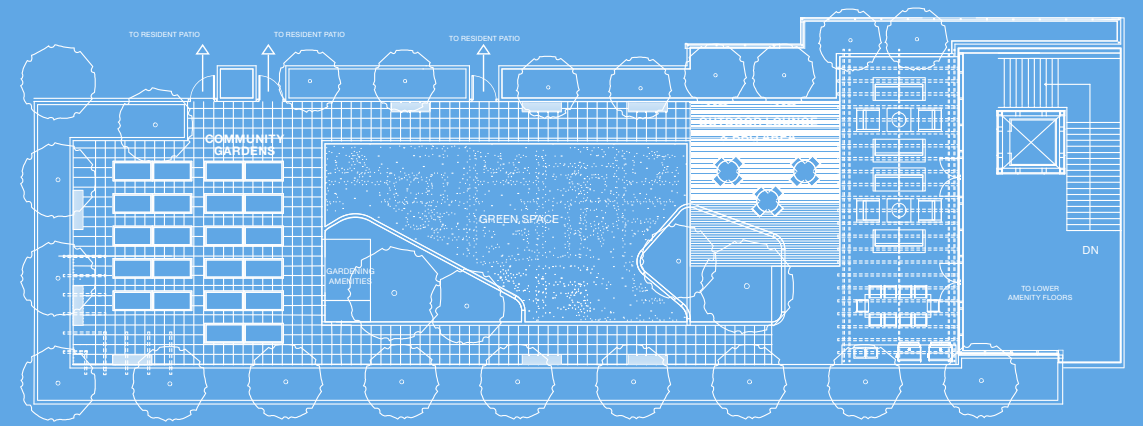


18,000
SQ. FT.
Three
Storeys,
One
Incredible
Amenity.

OUTDOOR LEVEL

Residents can enjoy spectacular sunsets and fresh air on the facility's rooftop where community gardens and areas for lounging and open-air yoga await.

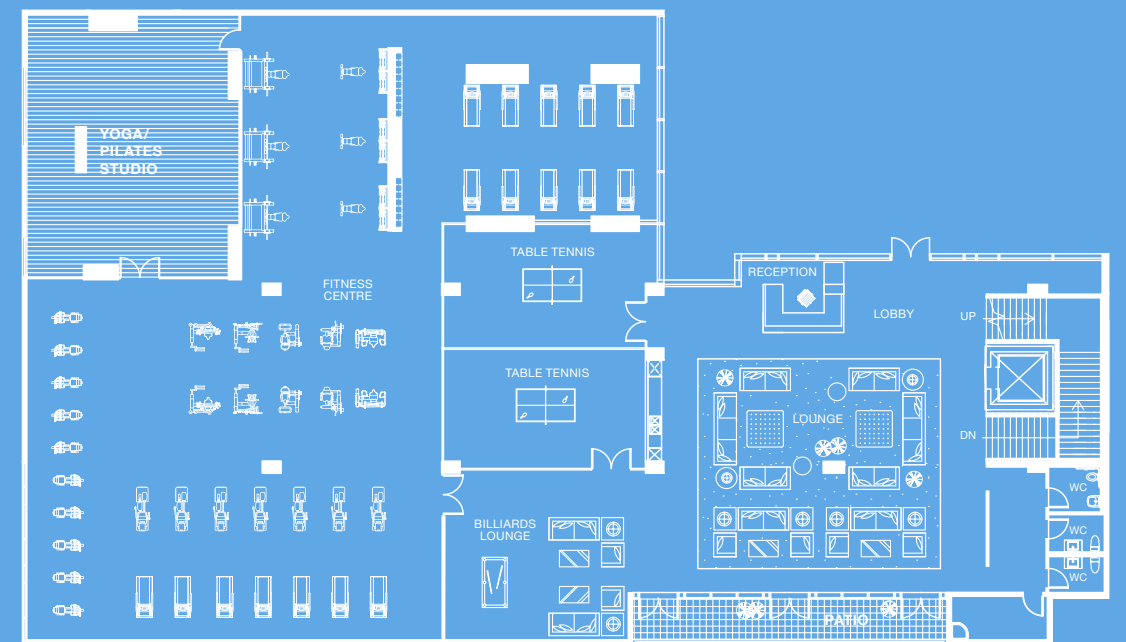
- Outdoor lounges and dining areas
- Rooftop community garden plots with gardening amenities
- Peaceful trellised seating areas, plus outdoor barbecues for grilling up a feast
- Landscaped edges for a park-like feel
- Grassy areas that are ideal for relaxing or hosting outdoor events



UPPER LEVEL

Located on the first podium level, the amenity's second floor is purposefully designed to create communal recreation spaces with views to an interior green courtyard and the nearby shopping boulevard.

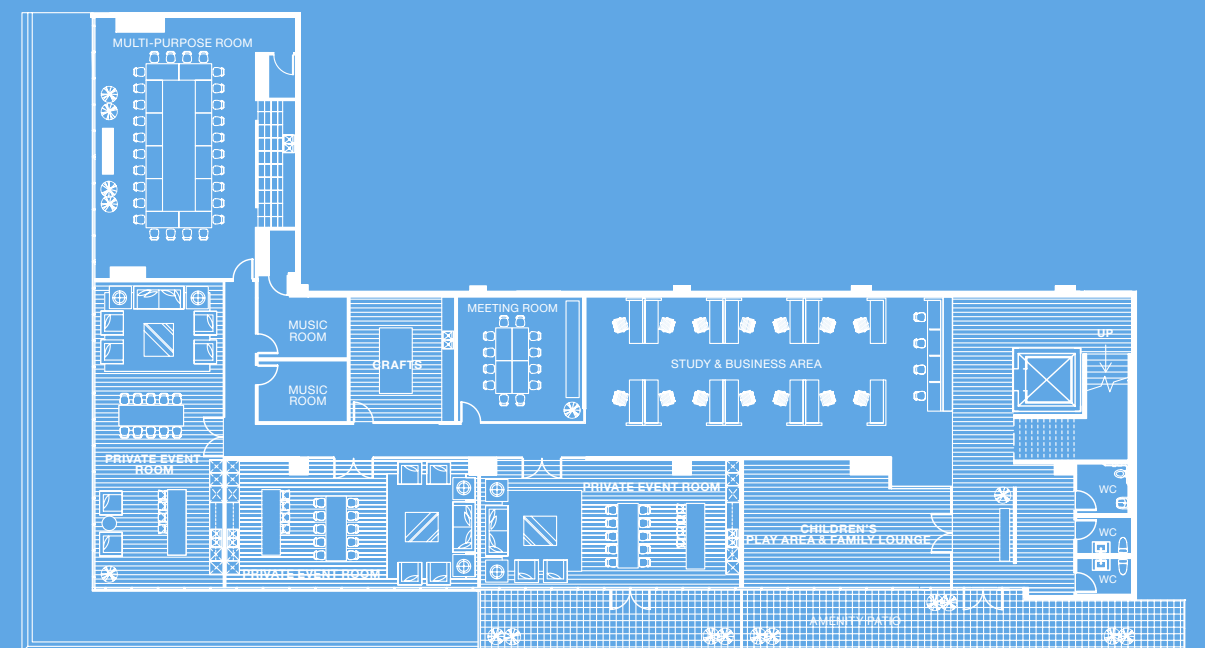
- State-of-the-art fitness equipment, including stationary bikes and rowing machines
- Stretching zones, lockers and a full selection of free weights
- Table tennis amenities
- Billiards area and lounge
- Yoga and Pilates studio
- Generous common area lounge with contemporary furnishings and kitchenette



LOWER LEVEL

The facility is favourably located in the southwest corner of the First Neighbourhood, providing the best light and an animated streetscape. Its lower level offers a variety of breakout spaces for individual or group use.

- Private event spaces for dining and lounging with full entertaining kitchens
- Dedicated music and crafting rooms
- Quiet business or study stations
- Children's play area and family lounge
- Large multi-purpose room with kitchenette that accommodates up to 30 people
- Bike repair areas and a dog wash station (parkade access)



08

VERIFIED VALUE
in The City of Lougheed.

Metro Vancouver: One Of The World's Most Livable Regions

The region's beauty meets the exceptional living experience of The City of Lougheed, giving residents all this:

01

This **VISION & MASTER PLAN** will transform The City of Lougheed into an example of residential excellence, granting homeowners unparalleled benefits that could come only from living in a new urban-energy centre.

02

Both the **SKYTRAIN & LOCATION** of The City of Lougheed are unmatched, with two SkyTrain lines integrated directly into the site, mere steps from home, in the centre of Metro Vancouver.

03

Life will be entertaining in all four seasons with all the **SHOPPING, DINING & CULTURE** in The City of Lougheed. Only here will indoor and outdoor shops, bistros, patios, office space and residences unite around a vibrant events plaza.

04

The site's **LANDSCAPING & GREENERY** plans take inspiration from the region's natural setting. Residents will always be close to nature on The City of Lougheed's tree-lined pedestrian walkways, colourful boulevards and in its spacious, grassy parks.

05

Residents will experience true peace of mind with the **SERVICE & SECURITY** provided by Shape. The company's long-term ownership in The City of Lougheed means immaculate grounds and exceptional staff, maintenance and event programming.

06

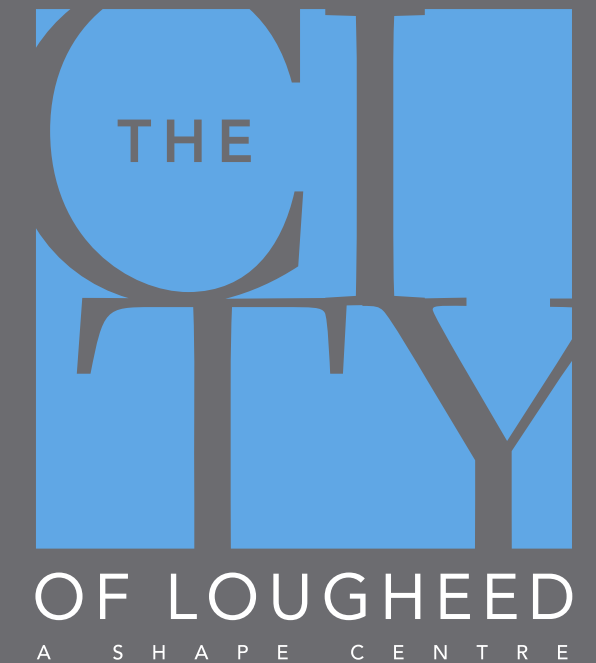
Intelligent planning defines the **HOMES & DESIGN** at The City of Lougheed. Shape's thoughtful architecture provides a fitting exterior to complement its uniquely livable layouts and forward-thinking features.

07

The **INDOOR & OUTDOOR AMENITIES** include an 18,000 square-foot residents-only facility outfitted with premium fitness equipment, games rooms, private entertaining lounges and an outdoor terrace for alfresco living.

08

The City of Lougheed will offer what no other residences can — timeless style, quality of life and a vast array of walkable experiences inside an expertly planned city. It all adds up to long-term **VERIFIED VALUE** for our fortunate homeowners.



FIRST NEIGHBOURHOOD • TOWER ONE

