



brytoncourt

Home. Where Your Story Begins.



EXCLUSIVE VIP PREVIEW PACKAGE



CONTINUING THE LEGACY OF WELL-BUILT RICHMOND TOWNHOMES

A project starts with a vision. Building a home is no different.

We at Jacken Homes take great pride in the homes we build. We begin with the vision of an ideal place to call home. An inviting space for relaxation, rest, and rejuvenation. Your family's safe-haven - the place where memories are both made and kept safe. Your story begins at home.

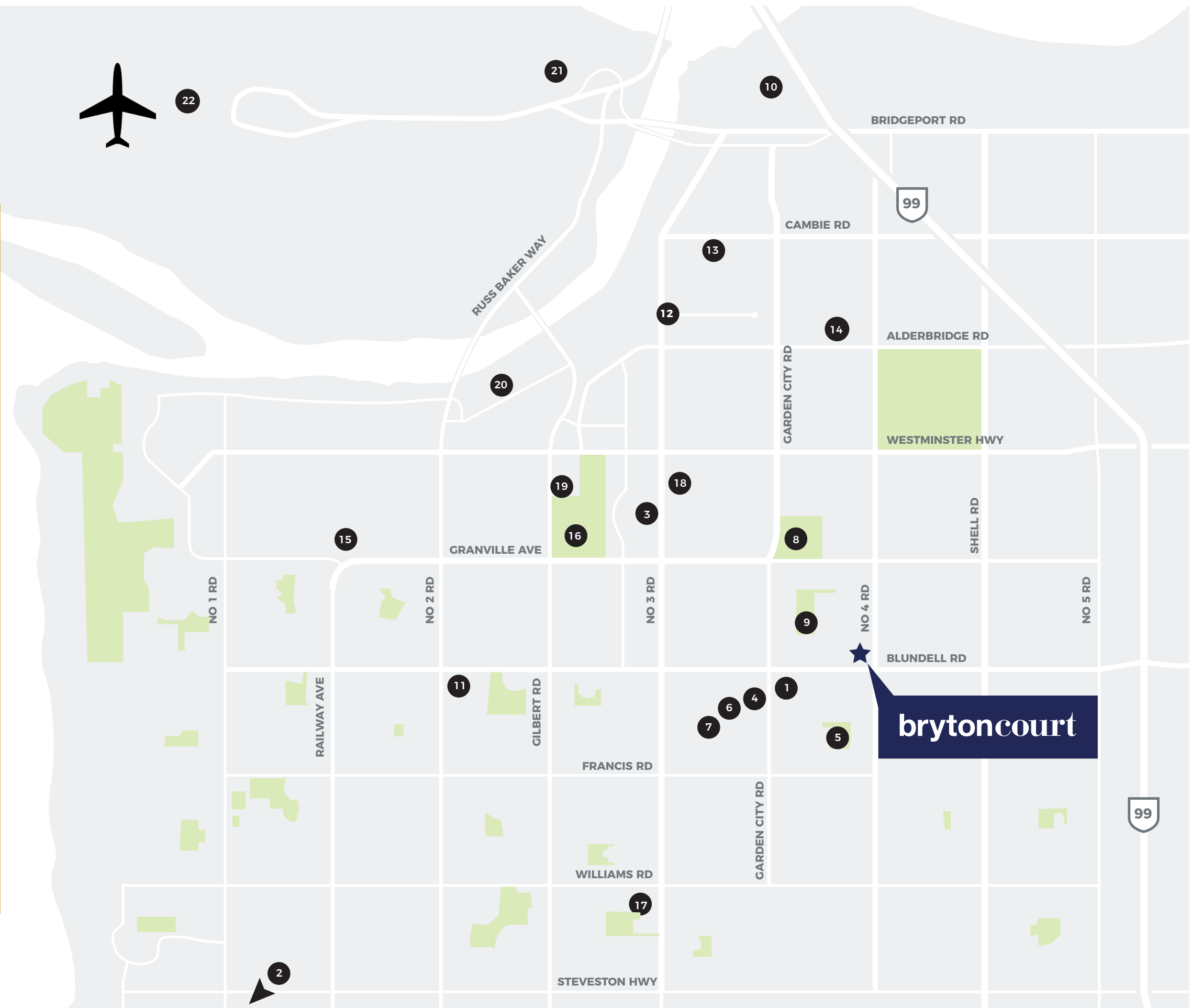
We know first hand that growing families are best suited by homes with flexible living areas, and the homes at Brytoncourt reflect that need. Each 3-Bedroom floor plan has been thoughtfully planned by iD Design Consulting to maximize daily efficiency. With a modern-meets-traditional aesthetic, Brytoncourt is a beautiful place to call home.



THE BRYTON COURT COMMUNITY

LEGEND

- 1 Central at Garden City
- 2 Steveston
- 3 Richmond Centre
- 4 Garden City Elementary School
- 5 Howard Debeck Elementary School
- 6 RC Palmer Secondary School
- 7 St. Paul's Elementary School
- 8 Garden City Park
- 9 Paulik Neighbourhood Park
- 10 Bridgeport Station
- 11 Blundell Centre
- 12 Alexandra Road
- 13 Aberdeen Centre
- 14 Central at Garden City
- 15 Thompson Community Centre
- 16 Minoru Park and Community Centre
- 17 Broadmoor Village
- 18 Canada Line - Brighthouse Station
- 19 Richmond Hospital
- 20 Richmond Olympic Oval
- 21 McArthurglen Designer Outlet
- 22 Vancouver International Airport





The Brytoncourt Community

Centrally located within the City of Richmond, Bryton Court is positioned on the corner of Blundell and Bridge Road within close proximity to shopping, schools, public transit, parks, and countless other amenities. Large-scale shopping malls such as Richmond Centre, Lansdowne Centre, and Aberdeen Mall, are located within 2-3 km of Bryton Court, and the Garden City Shopping Centre (IGA Marketplace, Shopper Drug Mart, Cha-time, Qoola and more) is only a short stroll away.





FEATURES & FINISHES

CRAFTSMAN-INSPIRED EXTERIORS

- Elegantly crafted exteriors designed by Yamamoto Architecture
- Craftsman-style architecture
- Private patios for outdoor entertaining (select plans)
- Extensive landscaping designed by PMG Landscape Architects

CONTEMPORARY INTERIORS

- One designer colour scheme to select from as curated by iD Design Consulting
- Open-concept living areas are designed with a 9' ceiling height
- Extra large master bedrooms accommodate a king-size bed
- Generous walk-in closet for master bedrooms
- Stacked laundry sets
- Luxurious vinyl flooring on main floor is easy to maintain

BATHE IN STYLE

- All powder rooms conveniently located on the main floor featuring porcelain floor tiles and undermount porcelain sinks
- European inspired wood grain laminate cabinetry in all bathrooms`
- All bathrooms complete with European polished chrome faucets and shower heads
- All Master ensembles have glass enclosed shower with handheld shower
- Recessed and wall sconce lighting

ADDITIONAL CONVENIENCES

- Stay comfortable all year around with energy-efficient forced-air heating, air conditioning* and radiant heating system.
- High efficiency condensing boiler powers radiant floor heating system to provide most comfortable living environment
- Heat Recovery Ventilation (HRV) circulates in fresh outdoor air
- Most units come with generous side-by-side garages, with room for bicycle storage and more
- Gas connections provided on each patio for heating and cooking
- Shared outdoor amenity with children's playground
- Water connection for hose conveniently located inside the garage for easy access and car washing

*Upgrade to ductless air-conditioning units for only \$10,000.00

CONTEMPORARY KITCHENS

- Quartz countertops are complemented by designer-selected hexagonal bianco carrera inspired porcelain tile
- Custom European inspired high gloss laminate paired with wood grain laminate kitchen cabinetry
- Extra-large kitchen islands with counter seating
- Premium appliance package includes:
 - 30" Stainless Steel Fridge
 - 30" Gas Cooktop
 - 24" Stainless Steel Dishwasher
 - 30" Electric Convection oven
 - Built-in microwave with stainless steel trim-kit
- Stainless steel one and a half-bowl sink with discreet In-Sinkerator waste disposal
- Generous kitchen island finished with engineered quartz

PEACE OF MIND

- Constructed to EnerGuide 82 Standards
- 2-5-10 New Home Warranty.
 - 2 years for materials
 - 5 years for building envelope
 - 10 years for structural defects



14 UNIQUE CRAFTSMAN-STYLE TOWNHOMES

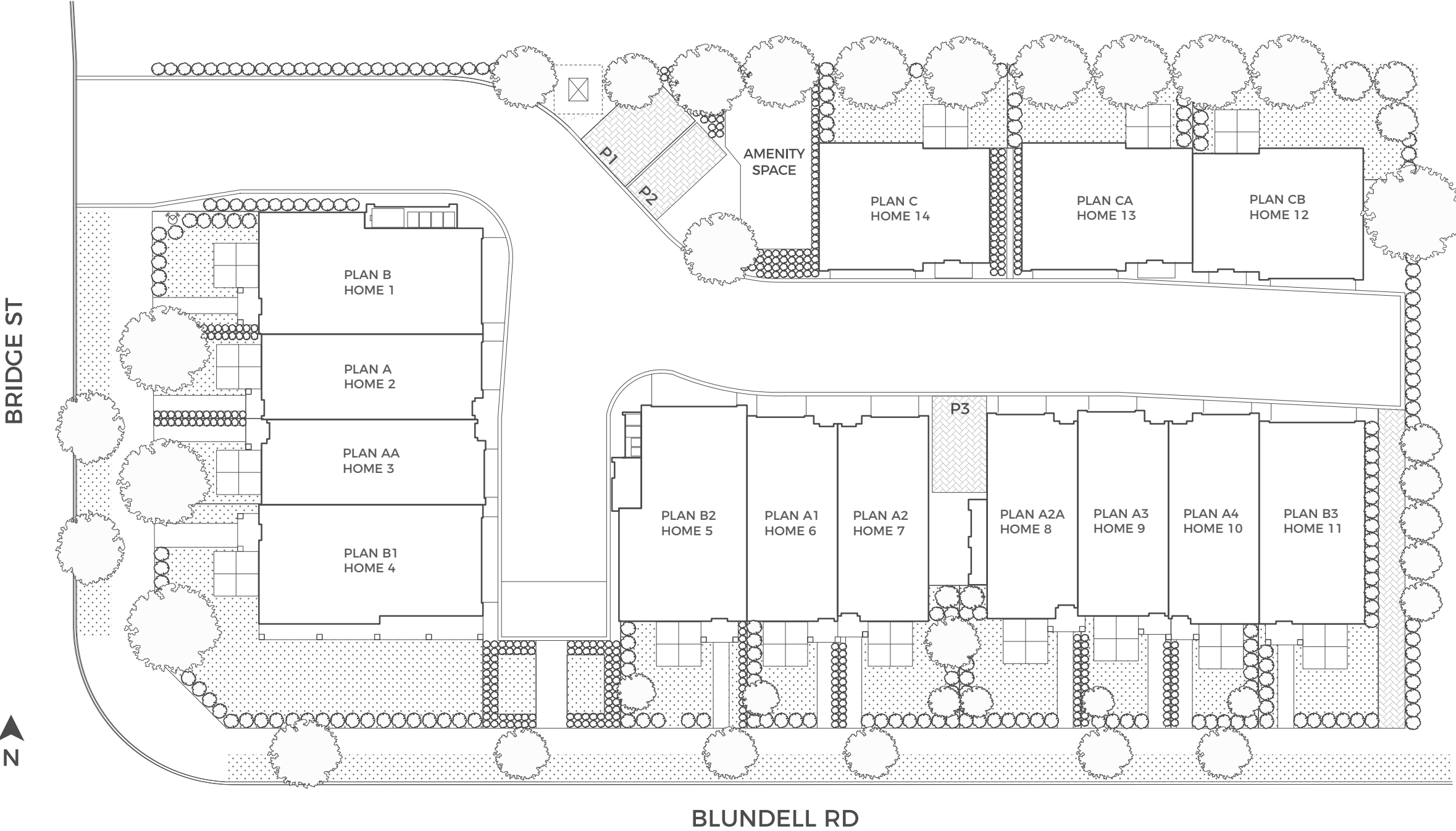
Brytoncourt comprises of 14 two-level and three level townhomes ranging from 1,196 Sq Ft to 1,879 Sq Ft. All units have private front or and backyards. A centrally located private shared amenity space for the little ones to roam around and provides an inviting destination for neighbours to gather.

The three- level townhomes also have private balconies located off the main level for additional outdoor space.

Vehicle access is conveniently located from Bridge Street and a pedestrian access from Blundell Road - making evening strolls to Garden City Centre and Garden City Park a breeze.



SITE PLAN







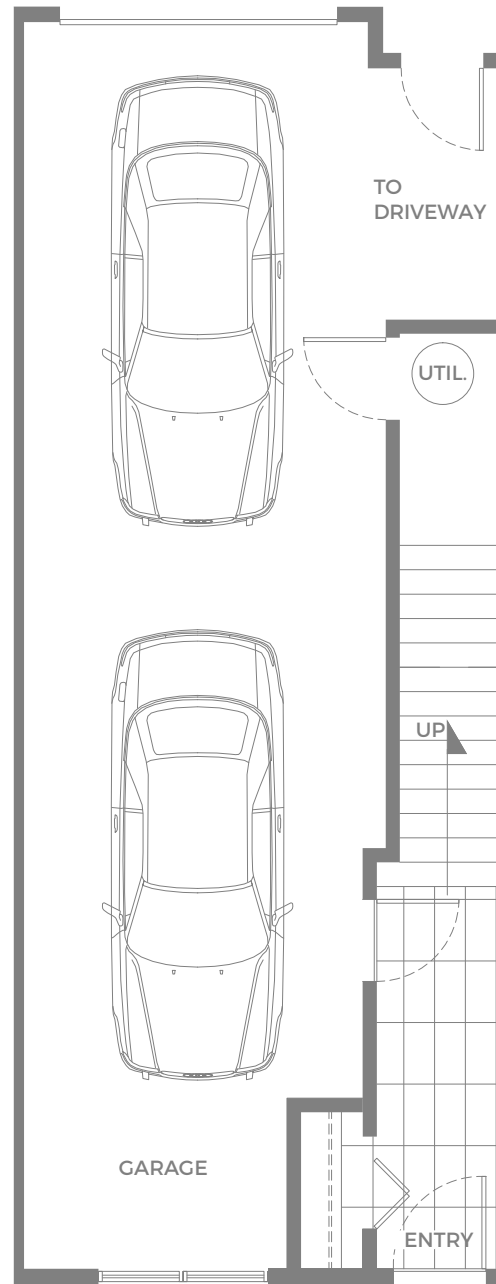
A

OUTDOOR SPACE

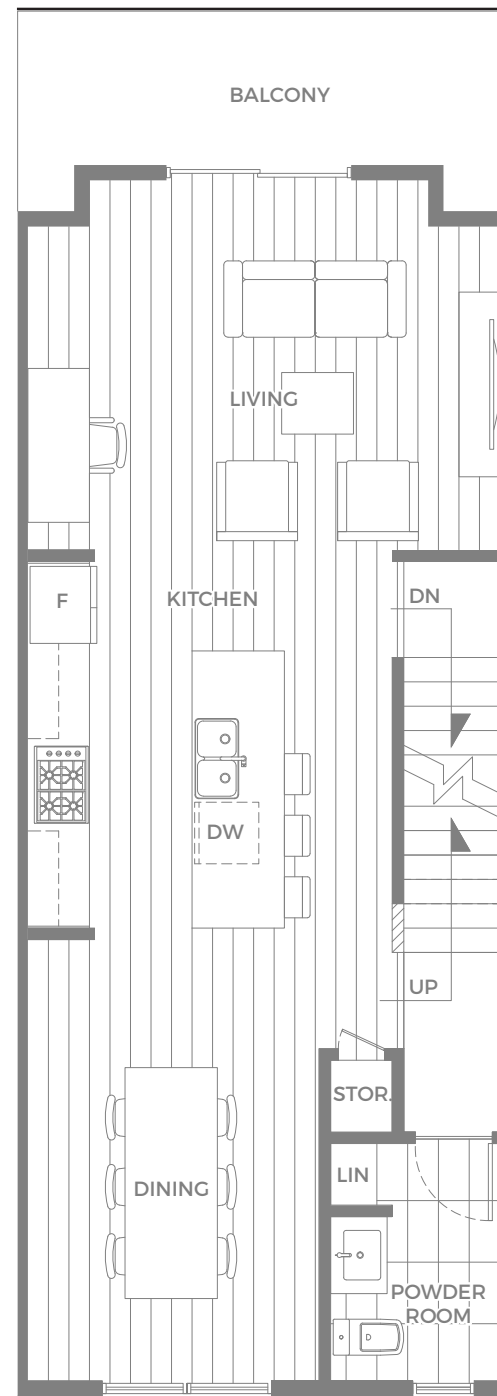
328 - 525 SQ FT

BALCONY

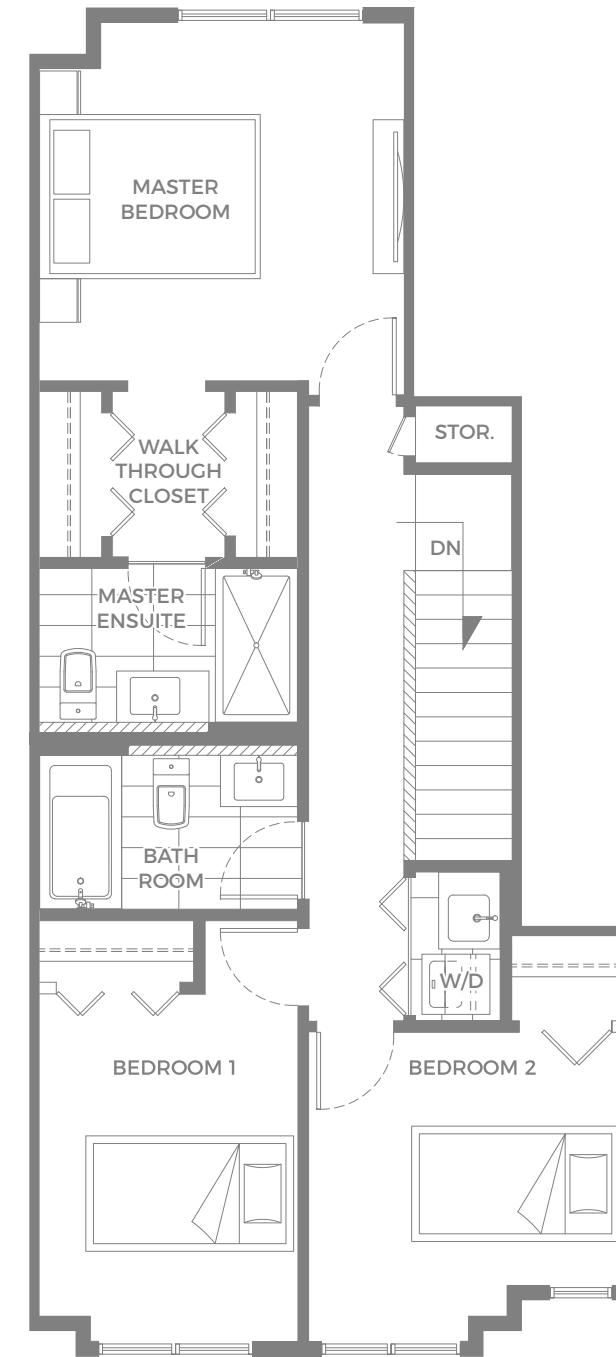
73 - 96 SQ FT



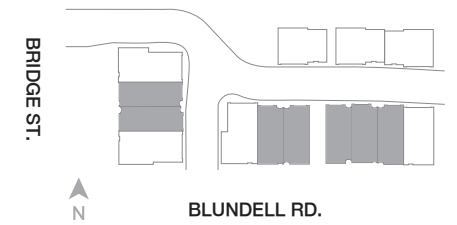
MAIN FLOOR



SECOND FLOOR



THIRD FLOOR



PLAN A | 3 BEDROOM | 1395 - 1480 SQ FT

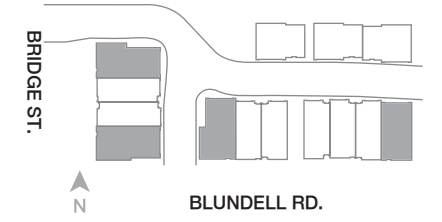
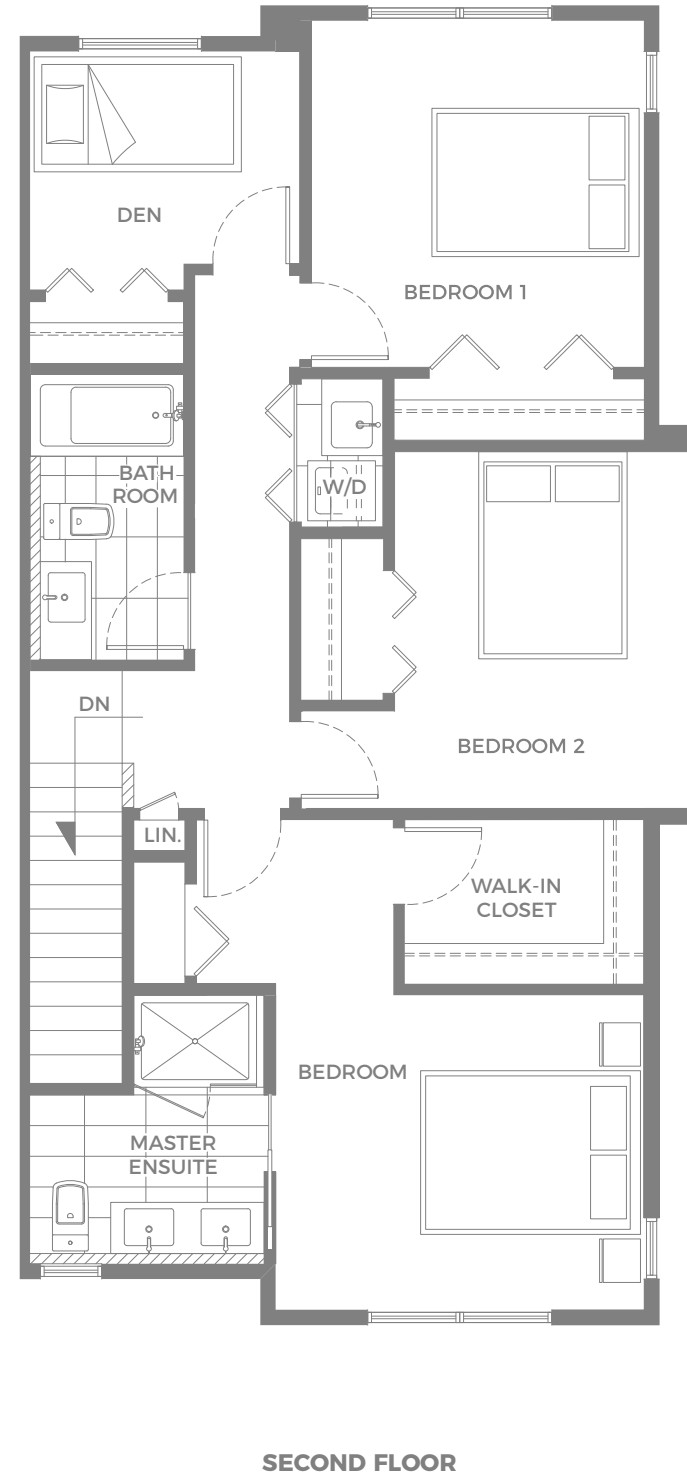
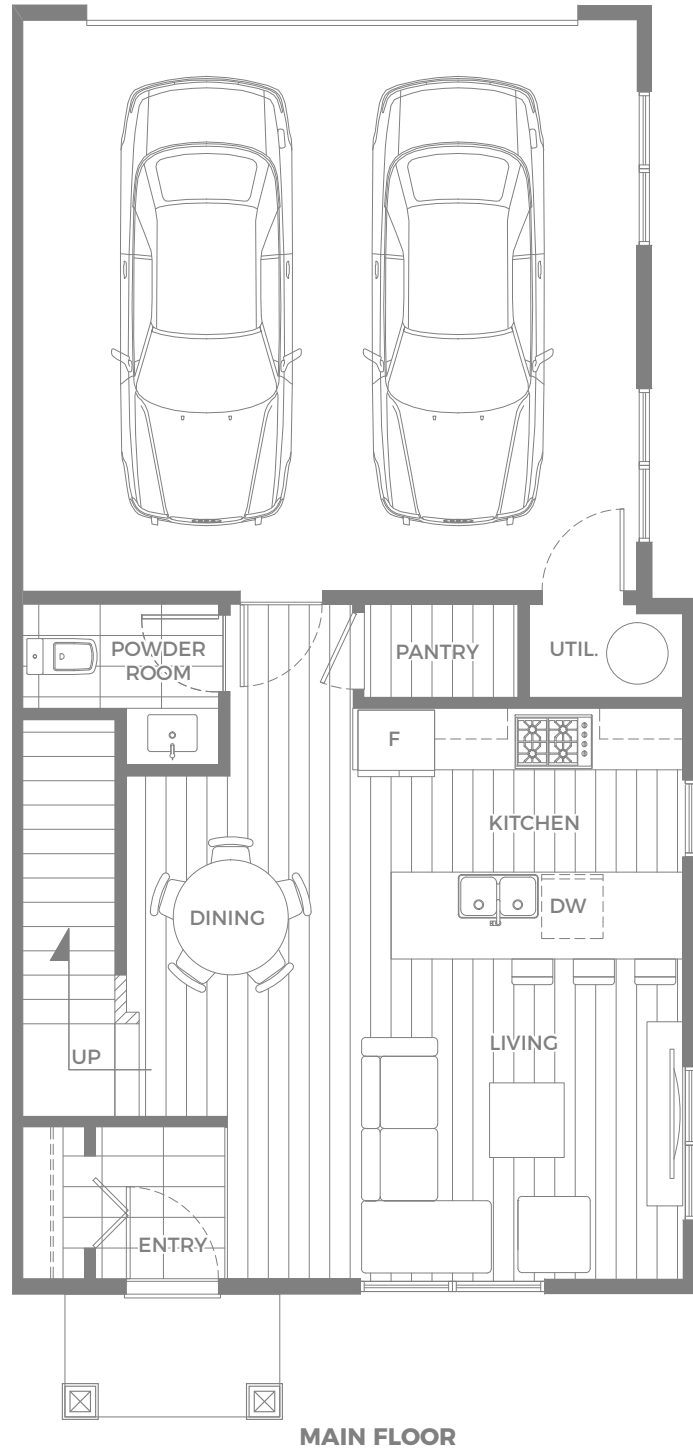




B

OUTDOOR SPACE

411 - 475 SQ FT



PLAN B | 3 BEDROOM + DEN | 1,196 - 1480 SQ FT

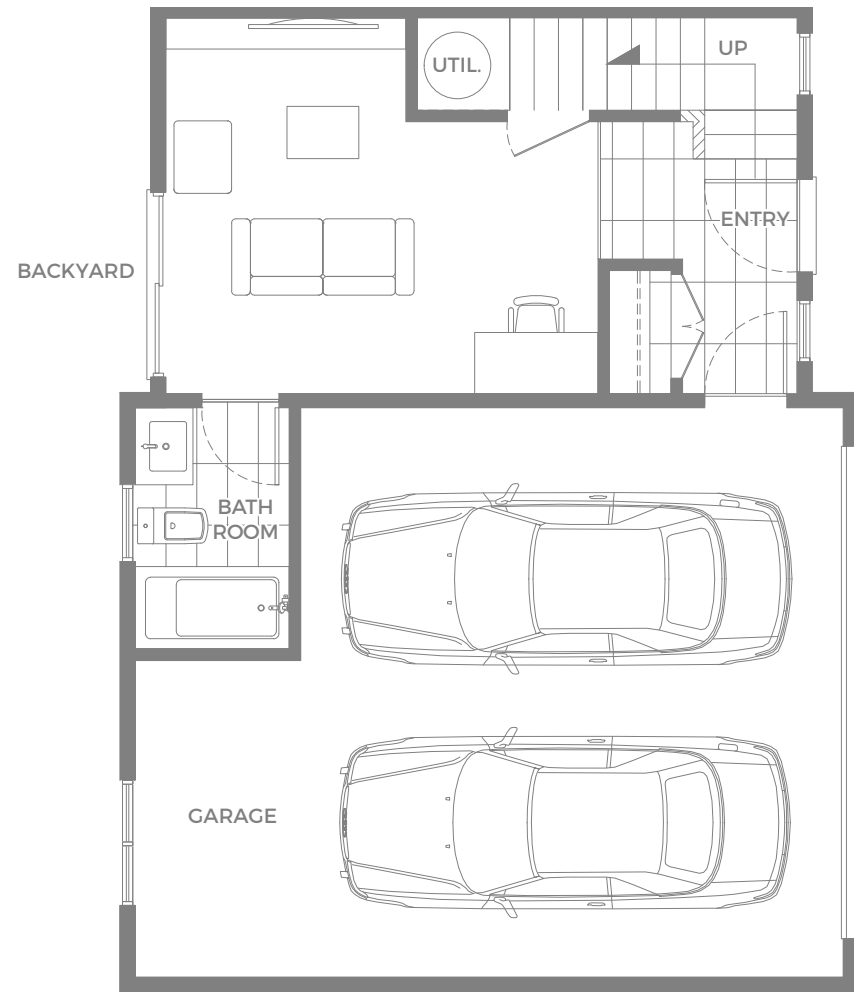
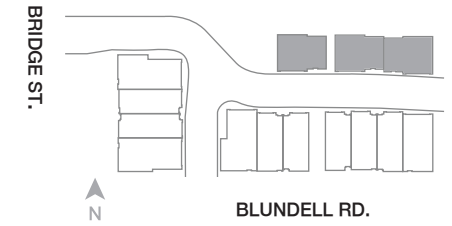




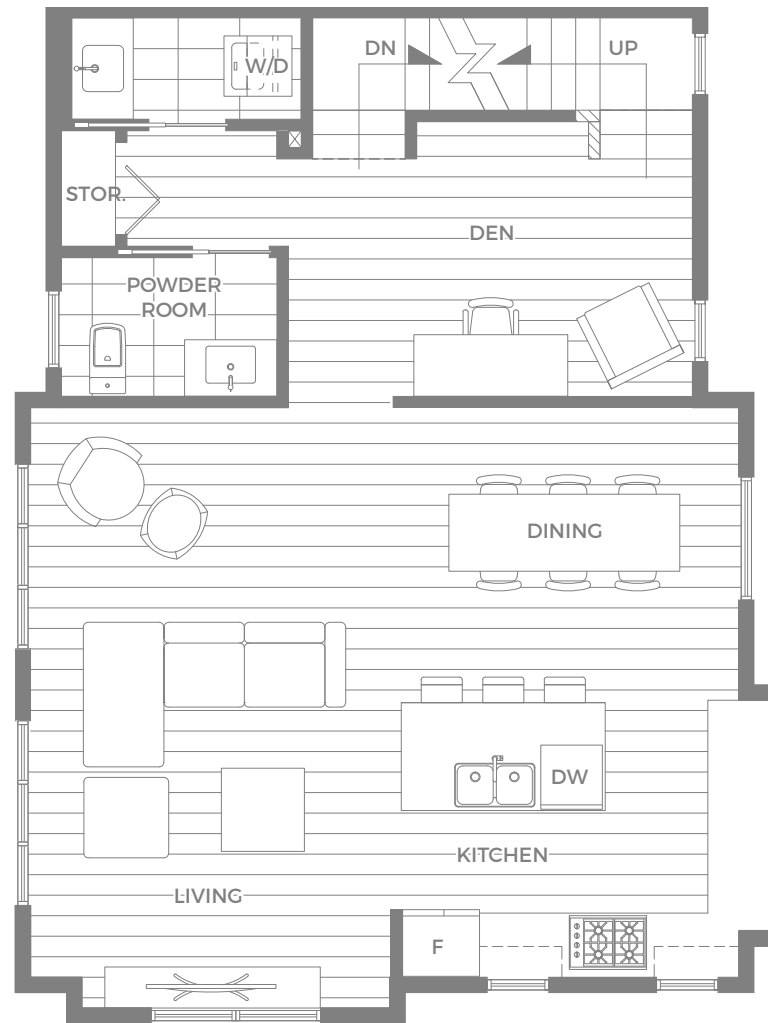
C

OUTDOOR SPACE

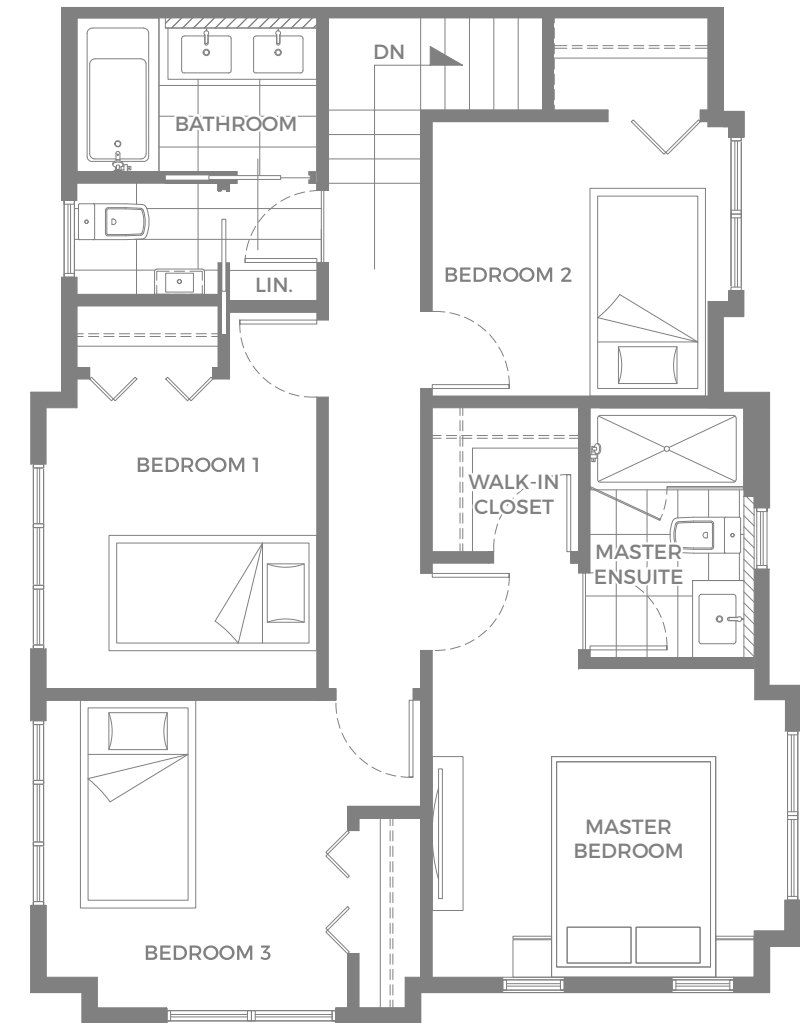
533 - 735 SQ FT



MAIN FLOOR



SECOND FLOOR



THIRD FLOOR

PLAN C | 4 BEDROOM + DEN + GF SUITE | 1,827 - 1,879 SQ FT



LD
DESIGN
CONSULTING



JACKEN HOMES

We build exquisite homes for families who value beautiful living spaces and welcoming communities.

As a family-owned company, Jacken Homes understands what it takes to build a home that improves the quality of your life and well-being. Our communities are crafted to perfection in notable areas of the Lower Mainland that are safe, peaceful, and welcoming. We pride ourselves on uncompromising quality and execution while pairing flawless functionality with beautiful design. A home should be your family's sanctuary, a place to build memories and grow for generations. Through intelligent building and innovative technologies, Jacken Homes continues to pioneer family communities that you will love coming home to.

FAMILY-FOCUSED LIVING

