

TROVE



WELCOME TO TROVE

MORE THAN A PLACE TO STORE VEHICLES, TROVE IS A COMMUNITY OF LIKE-MINDED
INDIVIDUALS WITH A PASSION FOR CARS AND A LUXURIOUS WAY TO SAVOUR
THE BENEFITS OF OWNING A SUPER CAR.



TROVE



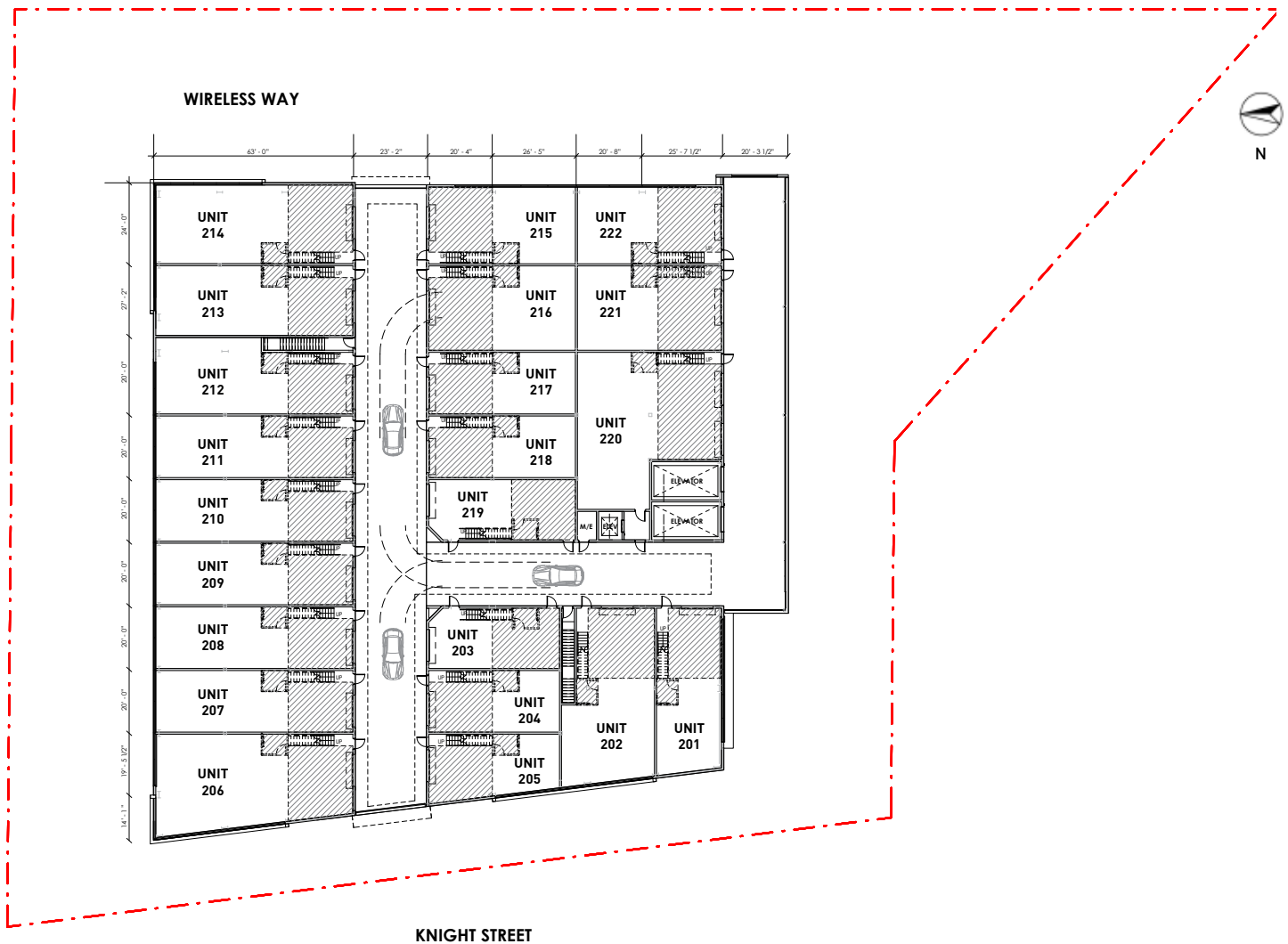
TROVE RICHMOND

Vancouver International Airport:	15 min.
Downtown Richmond:	10 min.
Downtown Vancouver:	30 min.
US Border:	20 min.



MEZZANINE

Renderings and sketches are representation only and may not be accurate. Dimensions, sizes, areas, features and layouts are approximate only and subject to change without notice. The developer reserves the right to make modifications to the information contained herein. E&OE. Version: Summer 2018.



MEZZANINE

Renderings and sketches are representation only and may not be accurate. Dimensions, sizes, areas, features and layouts are approximate only and subject to change without notice. The developer reserves the right to make modifications to the information contained herein. E&OE. Version: Summer 2018.

THE BUILDING

- TROVE is an exclusive collection of 45 luxury automotive storage condominiums
- Choose from a menu of upgrades or from four auto-themed interior packages to reflect your own unique style: Maranello, Detroit, Goodwood, or Stuttgart
- Unit sizes ranging from 1,000 sq. ft. to 2,500 sq. ft. with mezzanine
- Internal and external drive aisles designed to ensure ease of access to each unit
- Additional guest parking on site
- Easy access to Highway 99 and 91, YVR Airport, and Downtown Vancouver
- IB1 Industrial Business Park zoning
- Concrete construction building designed for the West Coast climate
- Roughed-in connections for high speed Internet, cable, and telephone

SECURITY

- Remote key-fob allows convenient personal access to the car elevators and straight into your unit without leaving your car (elevator access for second story owners only)
- Private gated security entrance with cameras
- Fire sprinkler system protecting all units and common areas
- Superior reinforced walls between each unit for maximum security

GROUND FLOOR UNITS

- Concrete slab-on-grade designed for approximately 250 psf load
- 10' wide automated glass grade loading door
- Glass aluminum frame entry door
- Signage opportunities available

SECOND FLOOR UNITS

- 10' wide solid automated grade loading door
- Secure metal entry door
- Exclusive 2 vehicle elevators and 1 passenger elevator for second storey access
- Select units offer expansive glazing for sunlight and panoramic views of the City or the North Shore mountains

UNIT FEATURES

- 19' height (18' clear, est.) ceiling
- Gas, sanitary, and water roughed-in to each unit
- Minimum 100amp electrical service
- NFPA 13 sprinkler system
- Gas fired unit heater
- Provisions to accommodate AC units by owner
- Mezzanine steel construction with concrete floor and 8' clearance
- Unit specific – clerestory glazing
- Each unit individually metered for utilities

Renderings and sketches are representation only and may not be accurate. Dimensions, sizes, areas, features and layouts are approximate only and subject to change without notice. The developer reserves the right to make modifications to the information contained herein. E&OE. Version: Summer 2018.



Italian culture encompasses the joy of living in all its facets and this certainly is brought to life in the Maranello interior. Fast luxury cars and motorcycles, steeped in history are displayed next to beautifully crafted furniture items from BB Italia emphasizing detail and quality finishes.

The opulent scale of the double width unit with feature central staircase graciously accentuate its luxurious surfaces whilst large sumptuous couches and dining area are perfect settings for receiving guests. The passion of Italy and its automotive design world warmly embrace each other in this dramatic environment.





Inspired by the emotive growl of American auto culture, the Detroit route creates a relaxed, honest and casual environment, allowing the end user to be immersed in the memory of route 66 and the open North American road whilst overlooking their collection of finely tuned motorcycles and large block-engine cars. The interior is unpretentious, and expresses the essence of the neighbourhood bar where friends are easily welcomed and the beer is on tap!



Renderings and sketches are a representation of a concept and may not be accurate. Dimensions, sizes, areas, features and layouts are approximate only and subject to change without notice. The developer reserves the right to make modifications to the information contained herein. E&OE



Taking its themes from the private members club and the essence of exclusivity, we have produced an environment which oozes quality and refinement. Privacy and secrecy are elements that are expressed here, whereby doors to the washroom and mezzanine are built in to the panelled walls, along with secret storage areas.

In the downstairs bar there is a games table, where guests can enjoy private card games whilst enjoying fine vintage scotch. Furniture in these rooms embraces mid-century themes that are inspired by Fleming's 007, which help create a very refined and well-crafted British experience.





Everything about this German themed design focuses on the art of engineering and precision and the beauty of this relationship, of which a manufacturer like Porsche is well known for. From an engineered staircase made from cantilevered steel, through to Miele kitchen products and a refined minimal kitchen design inspired by Bulthaup, the interior is replete with beautifully precise detailing and contemporary German furniture and lighting solutions.

